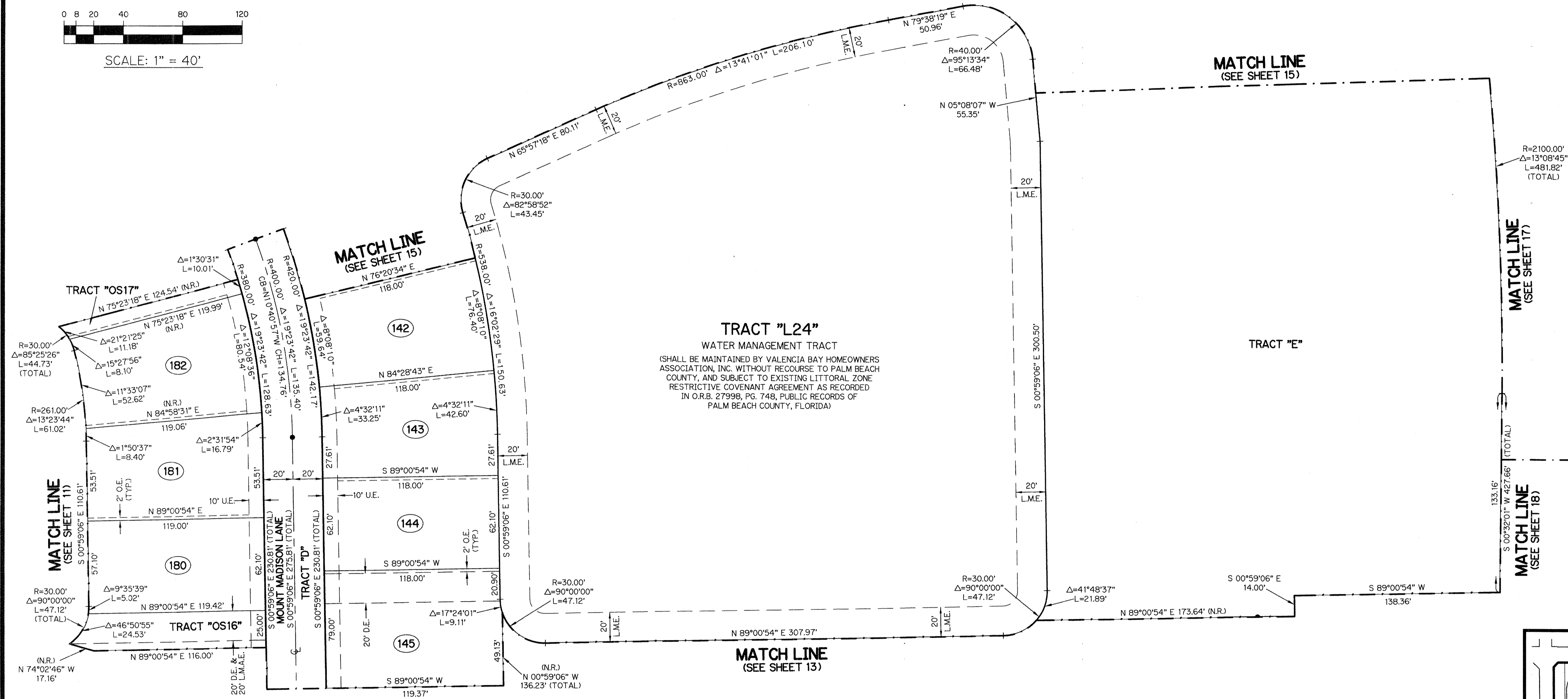
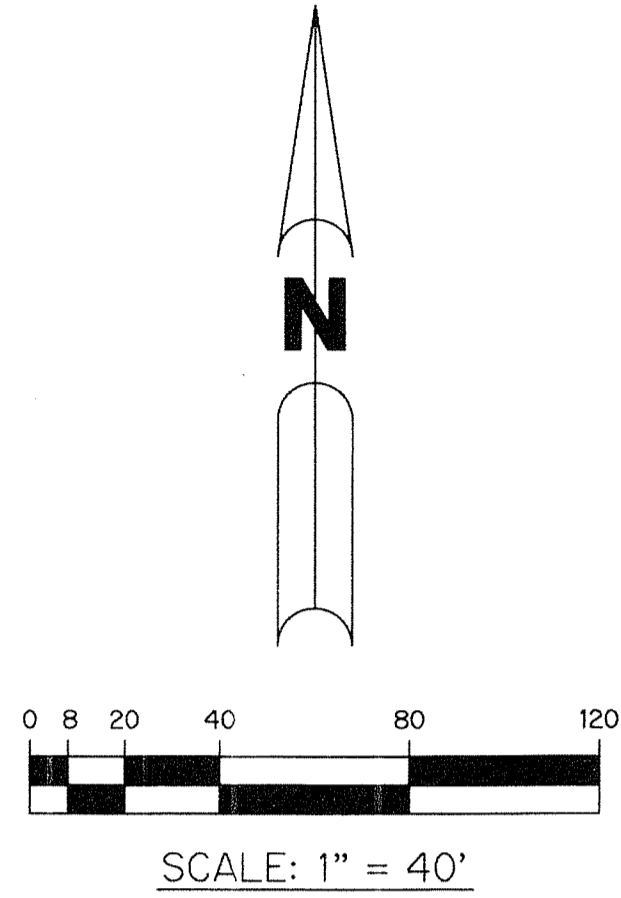


# VALENCIA COVE AGR-P.U.D. - SOUTH PLAT ONE

BEING A REPLAT OF ALL OF TRACT A-4, AND A PORTION OF TRACTS A-1 AND A-2, OF CANYON ISLES PRESERVE PLAT TWO, AS RECORDED IN PLAT BOOK 104, PAGES 152 THROUGH 156, AND A PORTION OF A ROAD, DYKE AND DITCH RESERVATION 30 FEET IN WIDTH, LYING WITHIN BLOCK 63, PALM BEACH FARMS COMPANY PLAT NO. 3, AS RECORDED IN PLAT BOOK 2, PAGE 45, AND ABANDONED ACCORDING TO OFFICIAL RECORDS BOOK 27563, PAGE 1245 ALL OF THE PUBLIC RECORDS OF PALM BEACH COUNTY, FLORIDA AND LYING IN SECTIONS 5 AND 6, TOWNSHIP 46 SOUTH, RANGE 42 EAST, PALM BEACH COUNTY, FLORIDA.

SHEET 14 OF 20

# 71



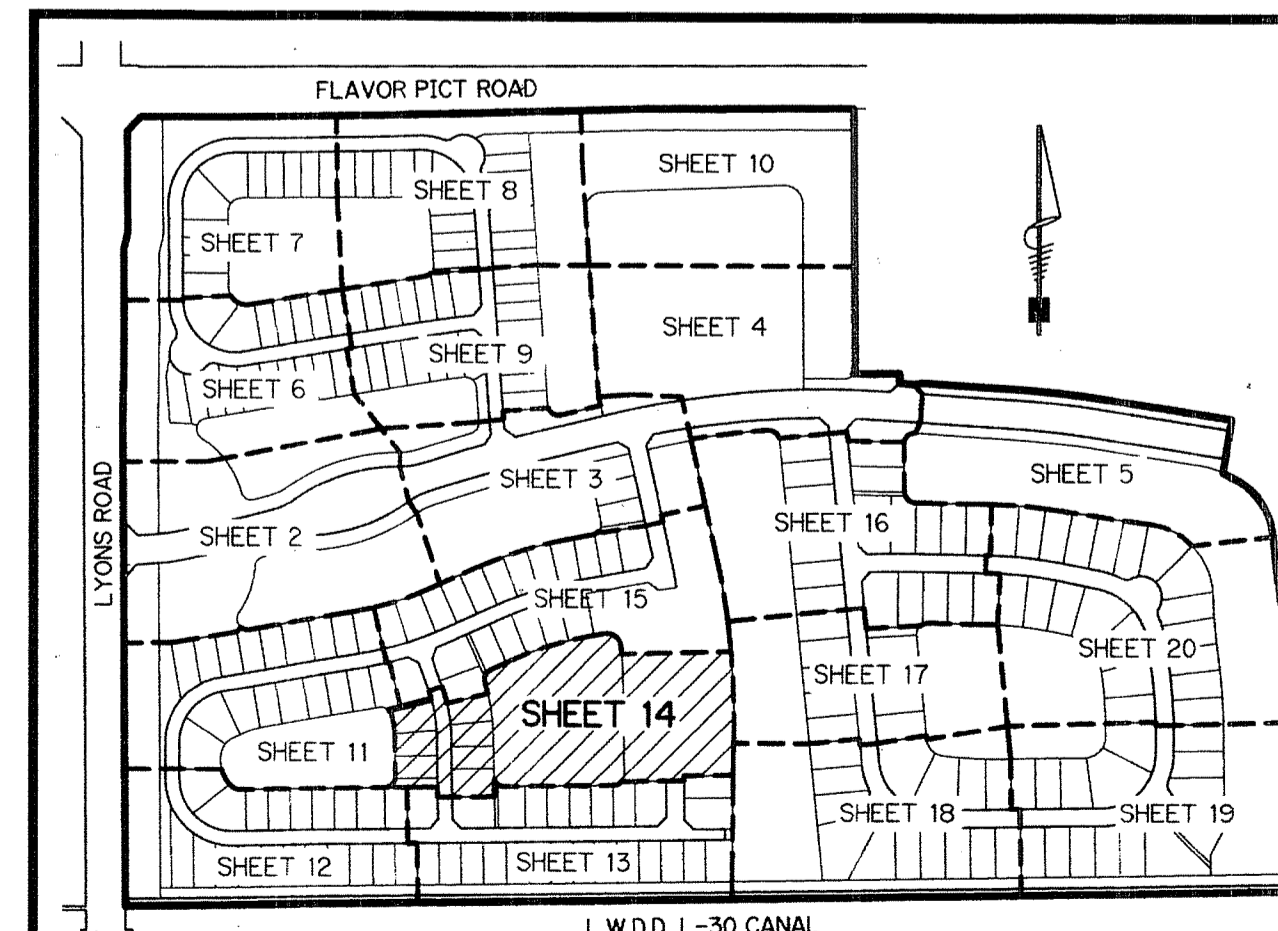
### LEGEND:

- - SET PERMANENT REFERENCE MONUMENT  
4"X4" CONCRETE MONUMENT WITH  
1.5" DISK STAMPED L.B. #7741
- - FOUND PERMANENT REFERENCE MONUMENT  
4"X4" CONCRETE MONUMENT WITH  
1.5" DISK STAMPED L.B. #6473
- - SET PERMANENT CONTROL POINT  
NAIL WITH 1.25" DISK STAMPED L.B. #7741
- - FOUND PERMANENT CONTROL POINT  
NAIL WITH 1.25" DISK STAMPED L.B. #7741
- AGR - AGRICULTURAL
- Δ - DELTA ANGLE
- B.E. - BUFFER EASEMENT
- CB - CHORD BEARING
- CH - CHORD DISTANCE
- ☉ - CENTERLINE
- D.B. - DEED BOOK
- D.E. - DRAINAGE EASEMENT
- F.A.E. - FIRE ACCESS EASEMENT
- F.P.L. - FLORIDA POWER & LIGHT
- L - ARC LENGTH
- L.A.E. - LIMITED ACCESS EASEMENT
- L.M.A.E. - LAKE MAINTENANCE ACCESS EASEMENT
- L.M.E. - LAKE MAINTENANCE EASEMENT
- L.W.D.D. - LAKE WORTH DRAINAGE DISTRICT
- L - NOT RADIAL
- N.T.S. - NOT TO SCALE
- O.R.B. - OFFICIAL RECORD BOOK
- O.E. - MAINTENANCE & ROOF OVERHANG EASEMENT
- P.B.C.U.E. - PALM BEACH COUNTY UTILITY EASEMENT
- P.B. - PLAT BOOK
- P.C.P. - PERMANENT CONTROL POINT
- P.D.E. - PUBLIC DRAINAGE EASEMENT
- PGS. - PAGES
- P.O.B. - POINT OF BEGINNING
- P.O.C. - POINT OF COMMENCEMENT
- P.S.M. - PROFESSIONAL SURVEYOR AND MAPPER
- P.U.D. - PLANNED UNIT DEVELOPMENT
- R - RADIAL
- RAD - RADIAL
- R/W - RIGHT-OF-WAY
- R.D. & D. - ROAD, DYKE AND DITCH RESERVATION
- S.T. - SURVEY TIE
- U.E. - UTILITY EASEMENT
- N 10000.0000  
E 100000.0000 - DENOTES STATE PLANE COORDINATES

### NOTE:

COORDINATES SHOWN ARE GRID COORDINATES DATUM = NAD 83 (1990 ADJUSTMENT)  
 ZONE = FLORIDA EAST ZONE  
 LINEAR UNIT = U.S. SURVEY FEET  
 COORDINATE SYSTEM = 1983 STATE PLANE TRANSVERSE MERCATOR PROJECTION  
 ALL DISTANCES ARE GROUND  
 SCALE FACTOR = 1.0000240  
 PLAT BEARING = GRID BEARING  
 GROUND DISTANCE X SCALE FACTOR = GRID DISTANCE

THIS INSTRUMENT PREPARED BY  
 PERRY C. WHITE, P.S.M. 4213, STATE OF FLORIDA  
 SAND & HILLS SURVEYING, INC.  
 8461 LAKE WORTH ROAD, SUITE 410  
 LAKE WORTH, FLORIDA 33467  
 LB-7741



### KEY MAP

N.T.S.  
SH0209 SHEET 14 OF 20